

Local Road Safety Program

Data-Driven Decision Making



presented to

LPESA – Fall 2021 Conference

presented by

Leo Marretta

Local Technical Assistance Program's

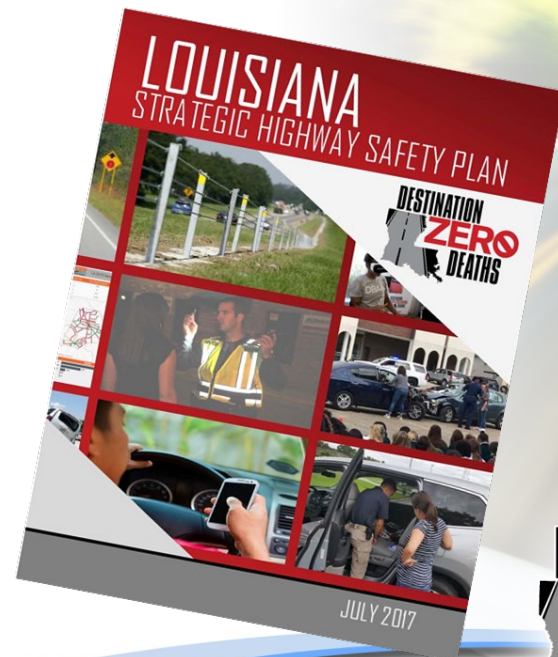
Local Road Safety Program

November 2021



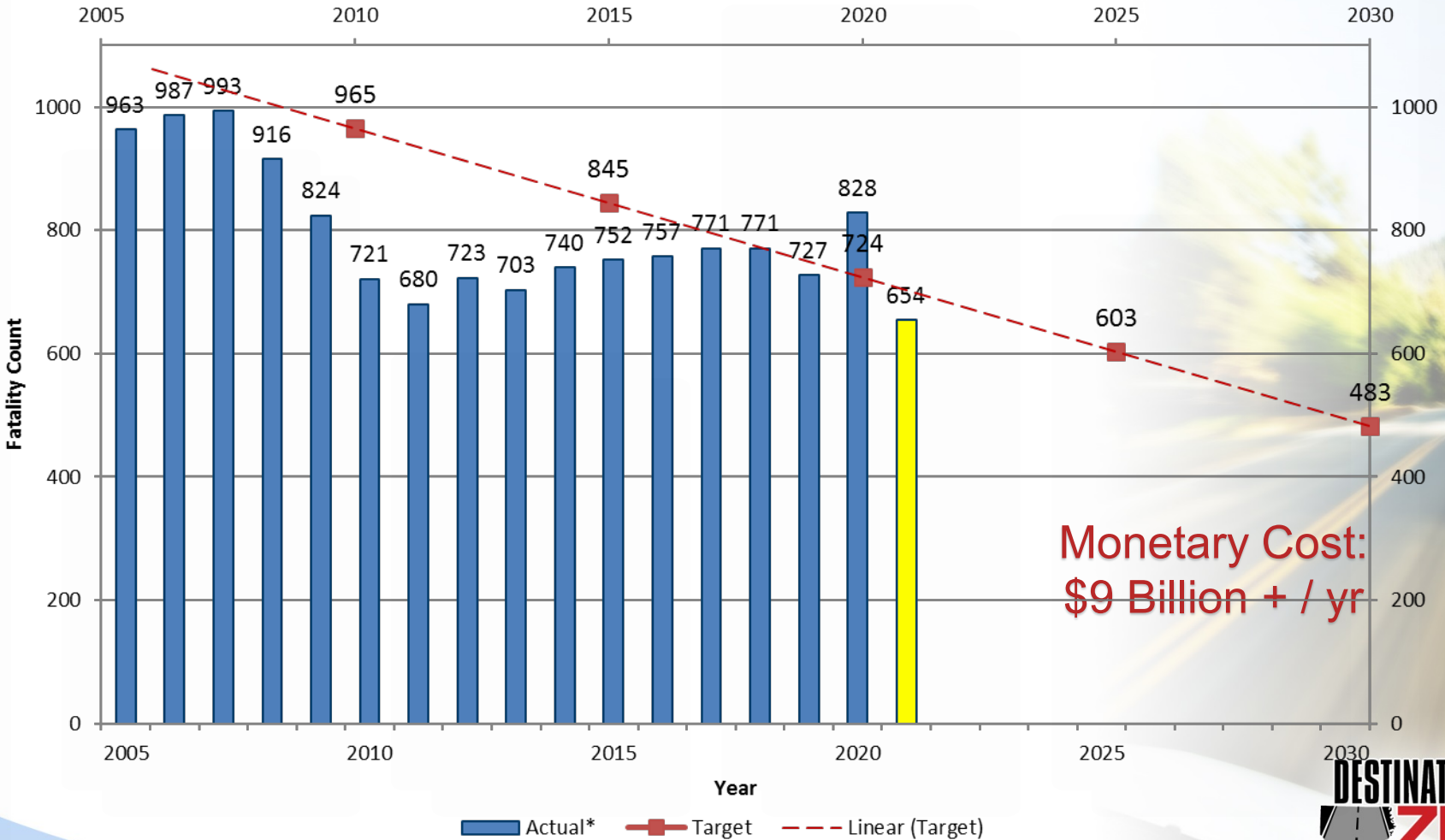
Louisiana's Strategic Highway Safety Plan

The mission of the Louisiana Strategic Highway Safety Plan (SHSP) is to reduce the human and economic toll on Louisiana's surface transportation system due to traffic crashes through widespread collaboration and an integrated 4E (**Engineering**, **Education**, **Enforcement**, **EMS**) approach.



SHSP Goal: Reduce Fatalities 50% by 2030


Actual vs Target Fatality Counts



LA's Strategic Highway Safety Plan Emphasis Areas (2017)



Impaired Driving




Occupant Protection



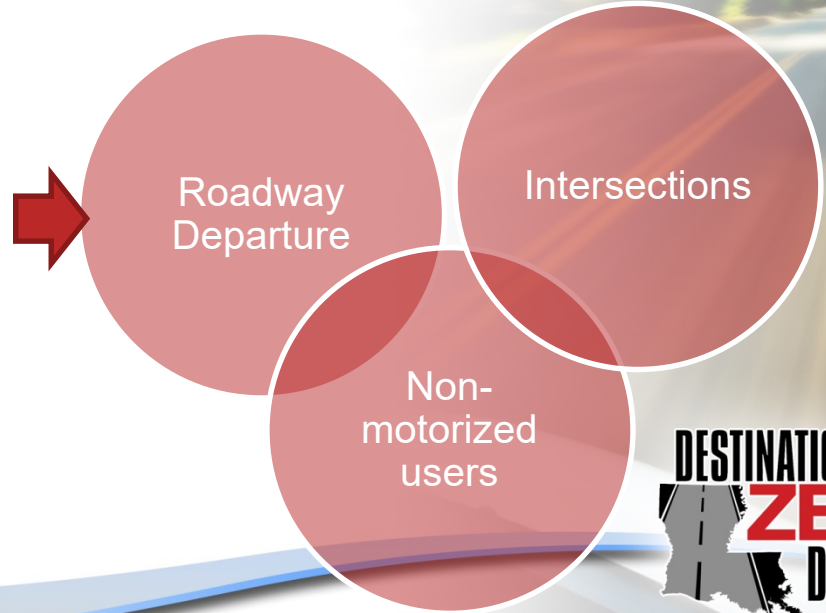
Crashes Involving Young Drivers



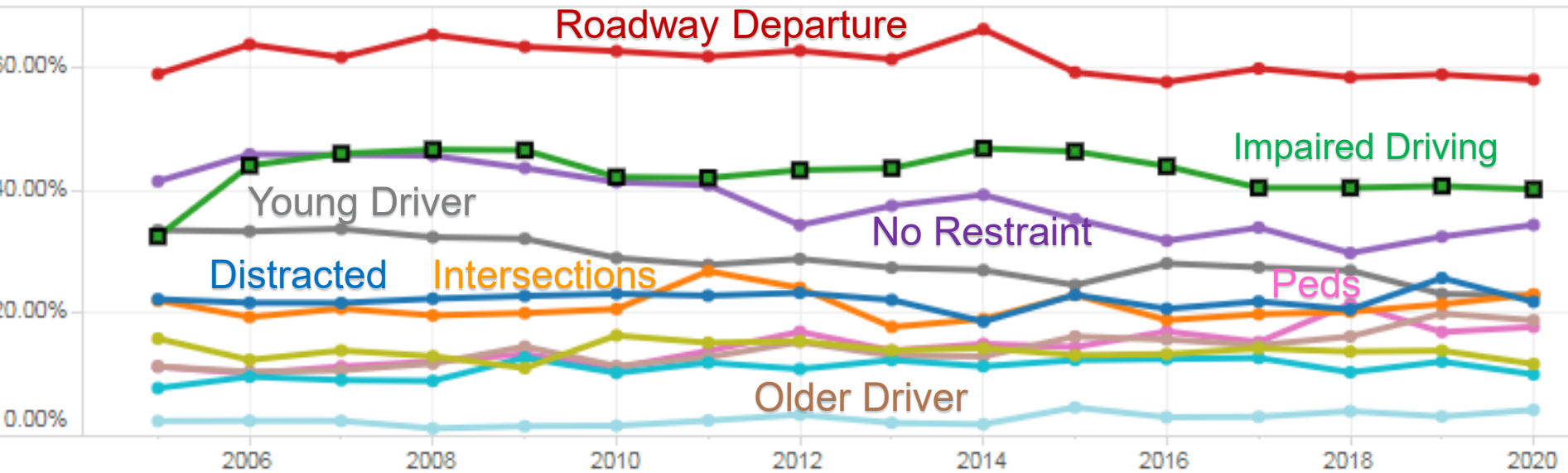
Infrastructure and Operations



Distracted Driving



Contributing Factors to Louisiana Fatalities



<http://crashdata.lsu.edu/shsps.aspx>



Safety on Locally Owned Roads

State Roads Local Roads



61,000

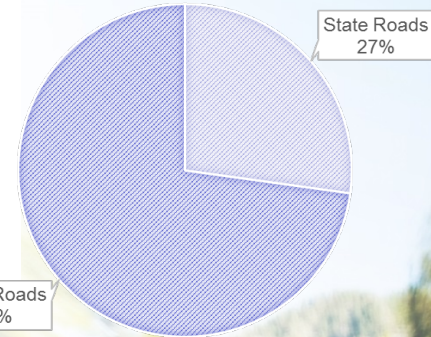
total roadway miles
in Louisiana

45,000

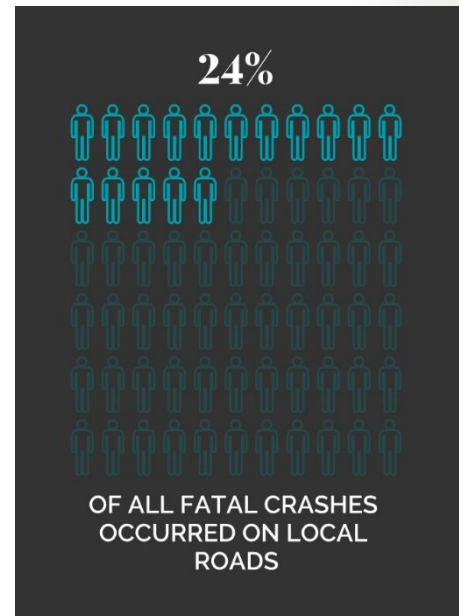
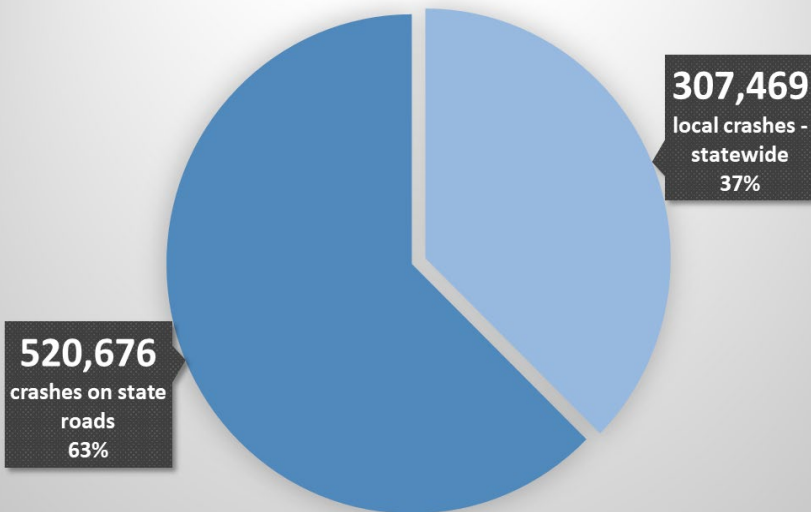
miles of local roads

17,000

miles of state roads



828,145 Crashes in Louisiana (2014 to 2018)

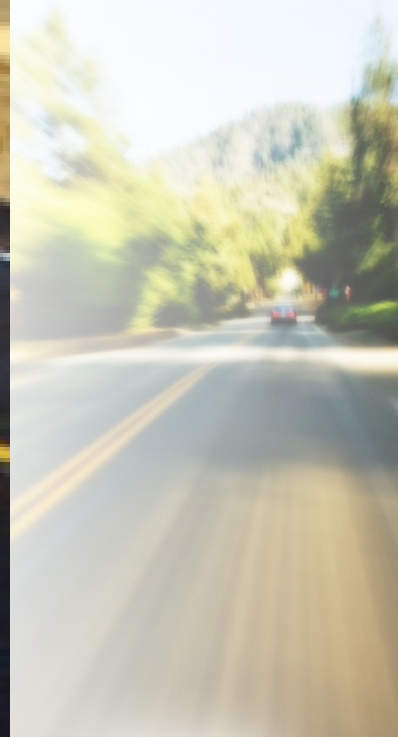


Local Road Safety Program (LRSP)

- Annual Budget: \$3 – 5 million
- Locally owned roadways only (No state roadways)
- No funding limitation, but any project over \$500,000 requires a cost-benefit analysis.
- DOTD funds 100% of eligible costs for design, construction, and construction engineering & inspection
- Call for Projects: LTAP accepts applications year-round

Local Road Safety Project Types:

Roadway Delineation (retro-reflective striping, rumble strips and stripes)



Local Road Safety Project Types:

Horizontal curve treatments (striping, signing, flashing warning devices, line of sight improvements)



Local Road Safety Project Types:

Intersection signing, stop bars, flashing warning devices, line of sight improvements, roundabouts



DESTINATION
ZERO
DEATHS

Local Road Safety Project Types:

FHWA Proven Safety Countermeasures

<https://safety.fhwa.dot.gov/provencountermeasures/>

OFFICE OF SAFETY

Proven Safety Countermeasures

SPEED MANAGEMENT



Speed Safety Cameras



Variable Speed Limits



Appropriate Speed Limits for All Road Users

ROADWAY DEPARTURE



Wider Edge Lines



Enhanced Delineation for Horizontal Curves



Longitudinal Rumble Strips and Stripes on Two-Lane Roads



SafetyEdgeSM



Roadside Design Improvements at Curves



Median Barriers

INTERSECTIONS



Backplates with Retroreflective Borders



Corridor Access Management



Dedicated Left- and Right-Turn Lanes at Intersections



Reduced Left-Turn Conflict Intersections



Roundabouts



Systemic Application of Multiple Low-Cost Countermeasures at Stop-Controlled Intersections



Yellow Change Intervals

PEDESTRIANS/BICYCLES



Crosswalk Visibility Enhancements



Bicycle Lanes



Rectangular Rapid Flashing Beacons (RRFB)



Leading Pedestrian Interval



Medians and Pedestrian Refuge Islands in Urban and Suburban Areas



Pedestrian Hybrid Beacons



Road Diets (Roadway Reconfiguration)



Walkways

CROSSCUTTING



Pavement Friction Management



Lighting



Local Road Safety Plans



Road Safety Audit

Local Road Safety Program Applications

- **Must file pre-application form found on LRSP website.**

<https://www.ltrc.lsu.edu/lrap/local-road-safety.html>

- **Roadway owner certifies and submits application. LTAP and Regional Safety Coalition can help.**
- **Helps:**
 - » **If the project is identified in a Parish Safety Plan**
 - » **If LTAP and the Regional Safety Coalition are involved in the discussions**



Local Road Safety Program Applications

Must Be:

- **Consistent with SHSP emphasis areas**
- **Data driven – corrects or improves a known safety issue**
 - ❖ **Over-represented fatal and severe crash history**
 - ❖ **Uses Crash Data Profiles, LA Crash Database or other supporting risk data analysis (RSA, HSM, etc.)**
 - ❖ **Identifies and addresses target roadway's type of over-represented crash categories**

Local Road Safety Program Applications

Must Have:

- appropriate use of proposed countermeasures
- stakeholder commitment

Must NOT Have:

- right of way issues
- drainage issues
- utility issues

Local Road Safety Program Pre-Application Form for Roadways

- Road Information - Road Name, Limits, Municipality/Parish, Owner Type
- “In Responsible Charge
- Describe the safety issue occurring at the location
- Does your Parish have a “Local Road Safety Plan”?
- If so, is this roadway included in your Parish’s “Local Road Safety Plan”?
- Locally generated information
- Recent or Pending Projects at this Location
- Have there been any recent land development or traffic generators permitted within ¼ mile of this location?

● VIDEO



For more information...

Program Website

<https://www.ltrc.lsu.edu/ltap/local-road-safety.html>

Steve Strength

Director, LTAP

(225) 767-9184 steve.strength@la.gov

Leo Marretta

LTAP LRSP Program Manager

(225) 767-9122 leo.marretta@la.gov

Laura Riggs

DOTD LRSP Program Manager

225-379-1143 laura.riggs@la.gov

